

MICROZONAZIONE SISMICA

Carta di microzonazione sismica

FA PGA

1/2

scala 1:5.000


Regione Emilia-Romagna


Comune di San Polo d'Enza



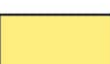
Regione Emilia-Romagna	Soggetto realizzatore  Direttori tecnici: Dr. Geol. Carlo Caleffi Dr. Geol. Francesco Cerutti	Data Aprile 2025
Dr. Geol. Matteo Baisi Dr.ssa Olga Brontesi Dr. Geol. Alessandro Ferrari Dr.ssa Geol. Melinda Raimondo		MS3


Legenda

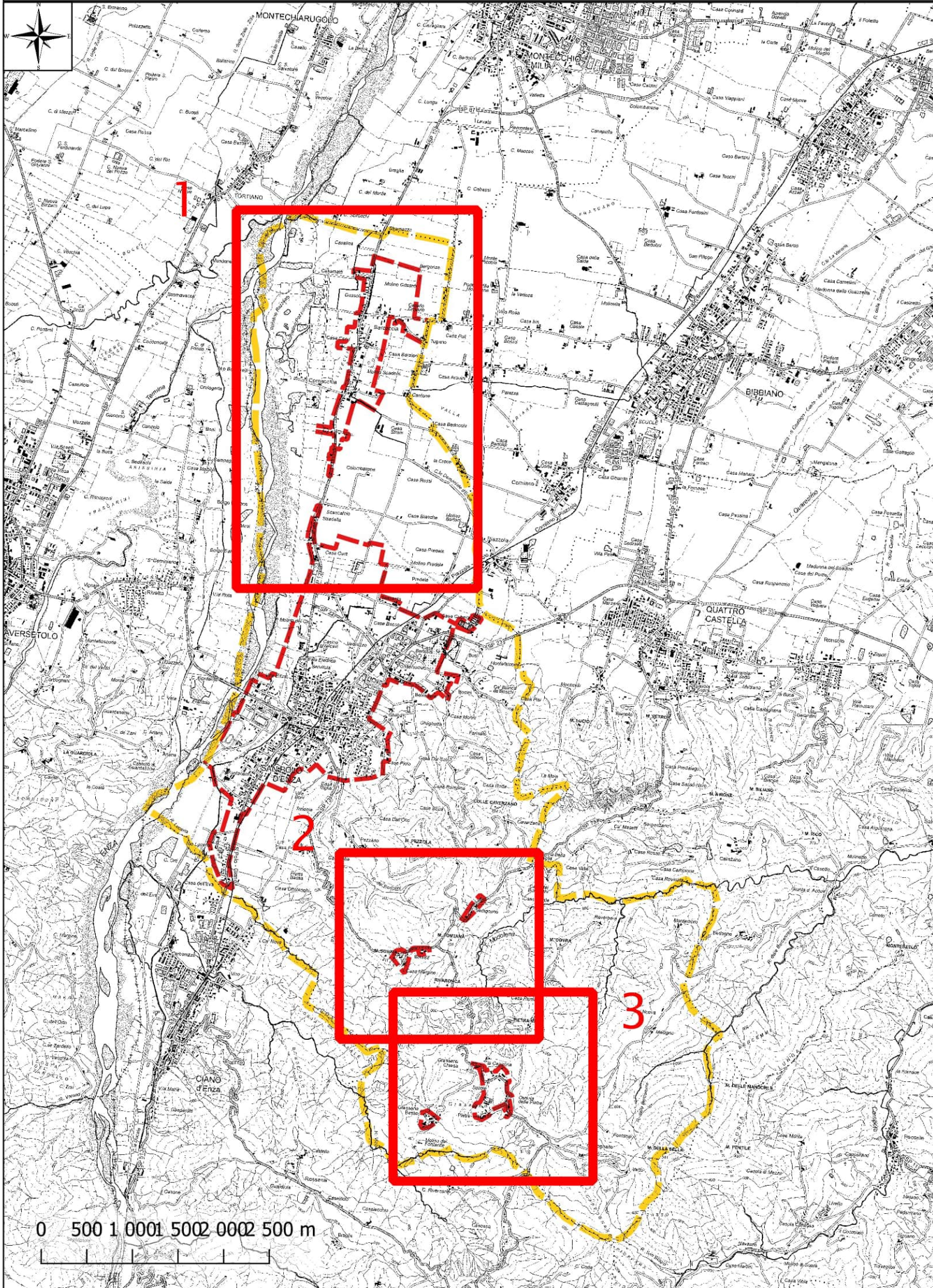
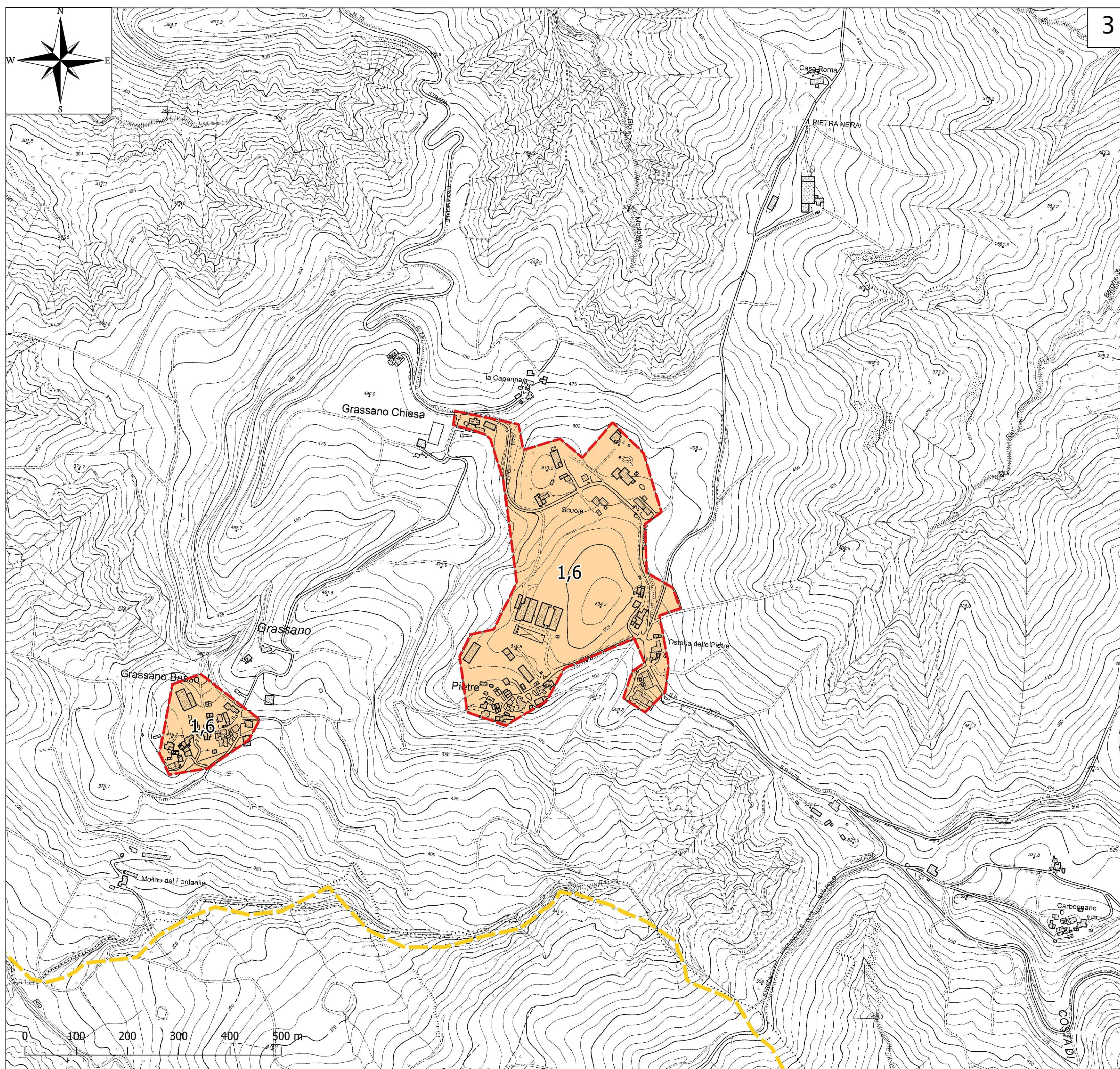
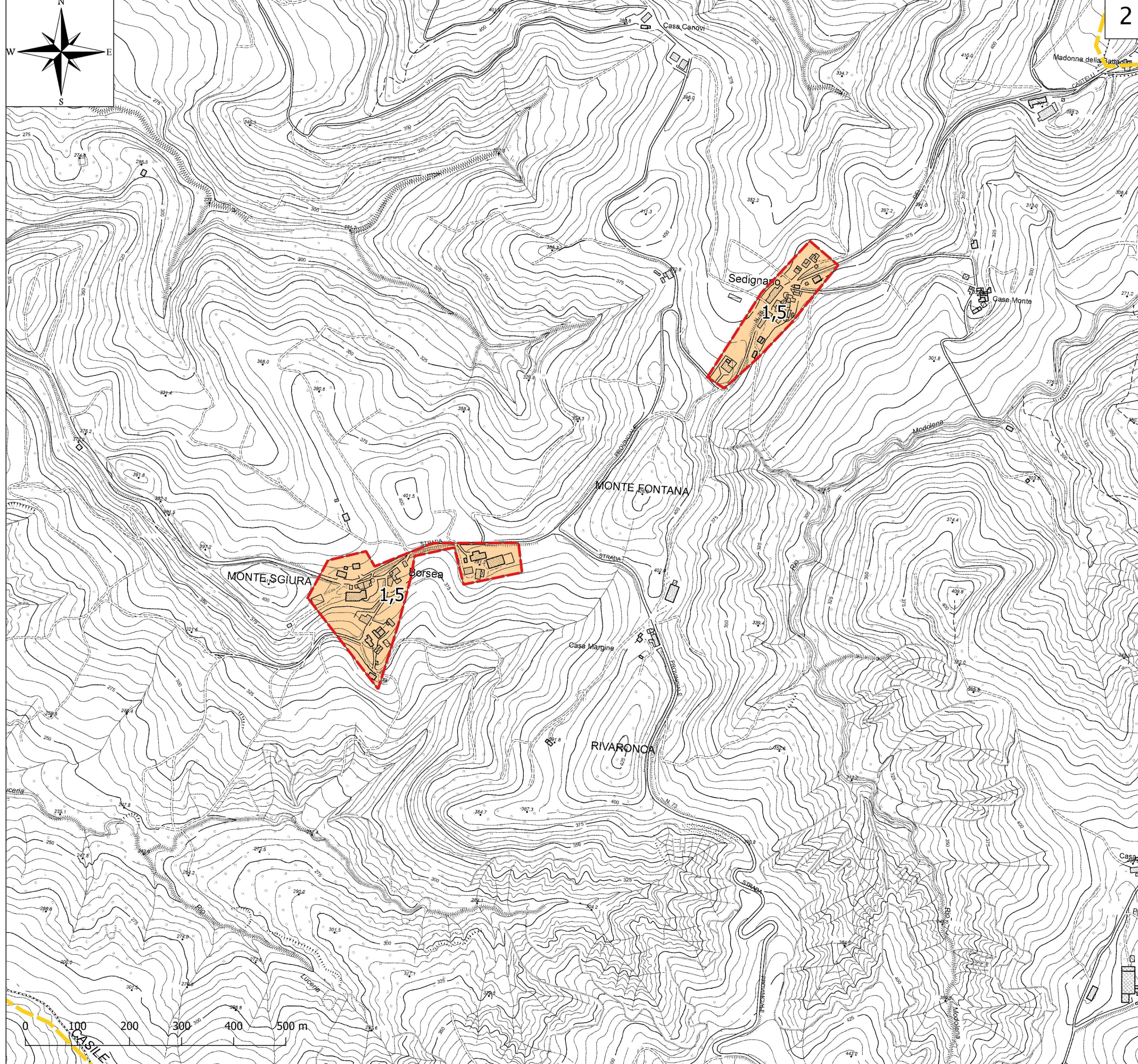
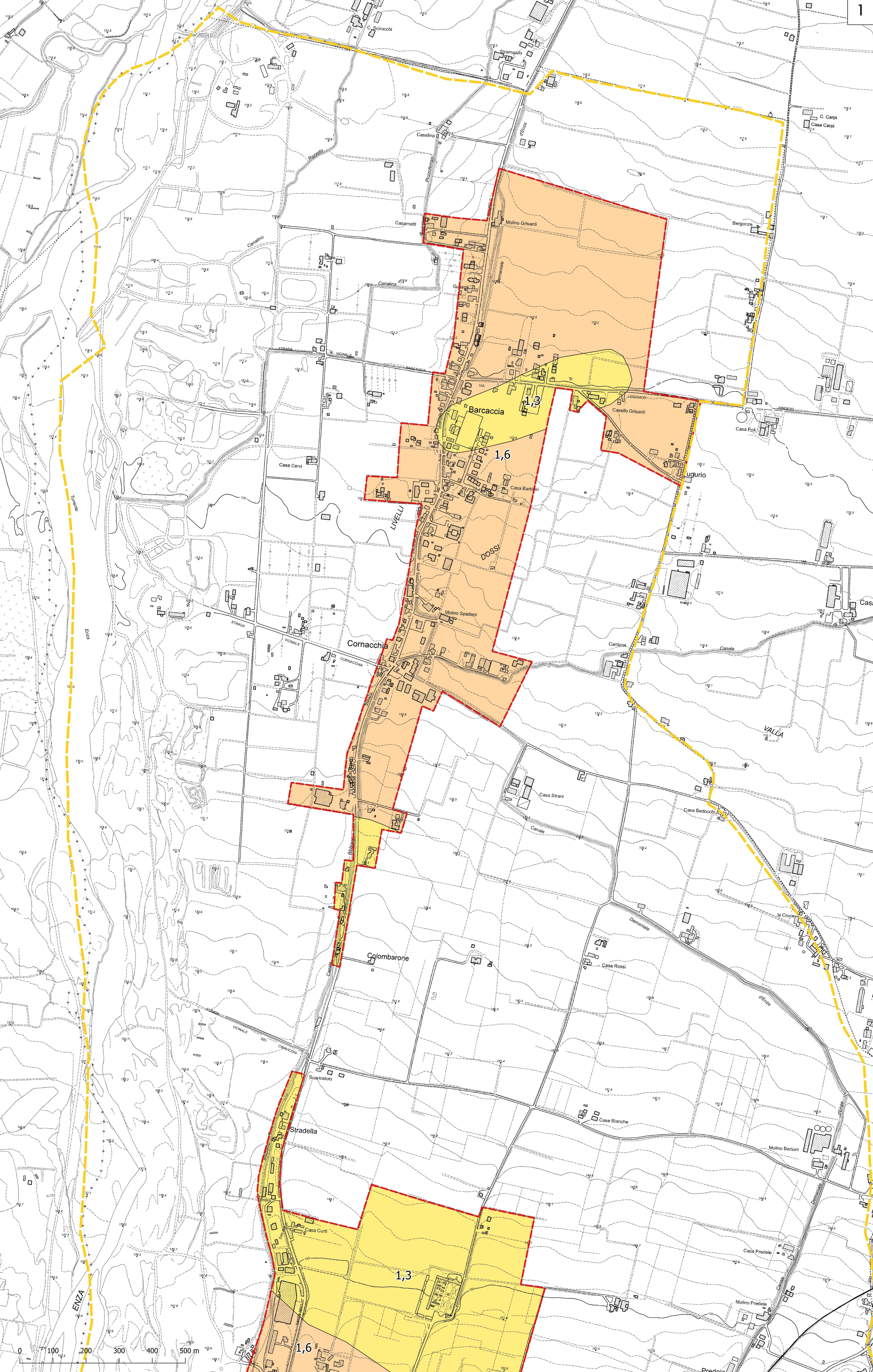
 Confine comunale

 Aree oggetto di Microzonazione Sismica

Zone stabili suscettibili di amplificazioni locali

 FA-PGA = 1,3 - 1,4

 FA-PGA = 1,5 - 1,6



MICROZONAZIONE SISMICA


Carta di microzonazione sismica

FA PGA 2/2


scala 1:5.000

Regione Emilia-Romagna

Comune di San Polo d'Enza




Regione
Emilia-Romagna


Soggetto realizzatore

Direttori tecnici:
Dr. Geol. Carlo Caleffi
Dr. Geol. Francesco Cerutti

Data
Aprile 2025


MS3


Legenda


 Confine comunale

 Aree oggetto di Microzonazione Sismica

Zone stabili suscettibili di amplificazioni locali

 FA-PGA = 1,3 - 1,4

 FA-PGA = 1,5 - 1,6

 FA-PGA = 1,9 - 2,0

